



SPRING 2025 NEW ARRIVALS





Sonora

Premium Cotton Comfort



Sonora H2X-DRY® S/S Polo

PSX-7M | PSX-7W

The Sonora H2X-DRY® Moisture Management polo combines maximum performance with high-style design. Artfully crafted features such as articulated action shoulders, a self-fabric collar and a classic button-down placket take looking great to new heights. Made with Certified Cotton and GRS-Certified Polyester for superior softness, durable Recycled Polyester to help maintain shape and transport moisture away from the skin with spandex for added stretch and recovery. UPF rating of 40+ protects the skin from the sun's rays.

SONORA H2X-DRY® S/S POLO

PSX-7M | PSX-7W



Anti-Curl Collar with Collar Stays (M's)
Helps maintain collar shape and structure, even after washing

Classic 3-Button Placket (M's)
Classic polo styling that is easy to wear and easy to style

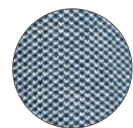
STORMTECH H2X-DRY® Moisture Management
Allows perspiration to escape from the body, helping to maintain optimal body temperature and comfort

Hem Side Slits
Adds fashion detail, comfort and ease of movement at hem

Open-V 2-Button Placket (W's)
Provides modern, premium styling, flexibility, and comfort

UPF Rating 40+
Protects the skin from the sun's rays

Contoured Seaming (W's)
Provides a closer to body fit and sleek silhouette



4-Way Stretch Fabric
Provides extra comfort and an unrestricted range of movement



RECYCLED
CONTENT



RESPONSIBLY
PRODUCED
COTTON



ACTIVE
STRETCH



ANTI-SNAG

Fabrication 53% Cotton/ 43% Recycled Polyester/
4% Spandex Pique

Weight Lightweight – 4.72 oz/yd² / 160gsm

**Technical
Features**

H2XDRY
MOISTURE MANAGEMENT

UVX
SUN PROTECTION

Men's Sizes S-3XL (Black, Navy, Ash S-5XL)

Women's Sizes XS-2XL (Black, Navy, Ash XS-3XL)

**Decoration
Options**



MSRP \$40.00 (A)



M's & W's: Black



M's & W's: Navy



M's & W's: Retro Blue



M's & W's: Ash

Sonora

Premium Cotton Comfort



Sonora S/S Knit Shirt

CKN-1M

The Sonora S/S Knit Shirt combines maximum performance with high-style design. Artfully crafted features with a self-fabric collar and a classic full button-down placket take looking great to new heights. Made from Certified Cotton for superior softness with GRS-Certified Polyester to help maintain shape and transport moisture away from the skin with spandex for added stretch and recovery. UPF rating of 50+ protects the skin from the sun's rays.

SONORA S/S KNIT SHIRT

CKN-1M

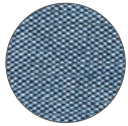


Collar Stand
Maintains collar shape and structure, even after washing

Button Down Collar
Secures the collar tips in place to help maintain its shape

STORMTECH H2X-DRY® Moisture Management
Allows perspiration to escape from the body, helping to maintain optimal body temperature and comfort

Single Chest Pocket
Conveniently stow and access personal items



4-Way Stretch Fabric
Provides extra comfort and an unrestricted range of movement

UPF Rating 50+
Protects the skin from the sun's rays

Contoured Hem
Ergonomic design that provides freedom of movement with a fashionably tailored fit



Fabrication 51% Cotton/ 46% Recycled Polyester/ 3% Spandex Pique

Men's Sizes S-3XL (Black S-5XL)

Weight 6.19 oz/yd² / 210gsm

Decoration Options



Technical Features

H2XDRY
MOISTURE MANAGEMENT

UVX
SUN PROTECTION

MSRP

\$50.00 (A)



Black



Navy



Retro Blue



Ash

Sonora

Premium Cotton Comfort



Sonora 1/4 Zip Pullover

FPL-3M | FPL-3W

The Sonora H2X-DRY® 1/4 Zip Pullover combines maximum performance with high-style design. Artfully crafted features with a self-fabric collar and a double-welted 1/4 zip opening take looking great to new heights. Made from responsibly produced Certified Cotton for superior softness and GRS-Certified Polyester and 3% Spandex Pique to help maintain shape and transport moisture away from the skin. UPF rating of 50+ protects the skin from the sun's rays.

SONORA 1/4 ZIP PULLOVER

FPL-3M | FPL-3W



1/4 Zip with Double Welt
Adjust to shut out the cold or allow heat to escape

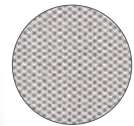
STORMTECH H2X-DRY® Moisture Management
Allows perspiration to escape from the body, helping to maintain optimal body temperature and comfort

UPF Rating 50+
Protects the skin from the sun's rays

Self Fabric Knit Cuff
Provides enhanced durability and comfort

Semi-Auto Locking Zipper
Engineered to lock in position during activity

Contoured Seaming (W's)
Provides a closer to body fit and sleek silhouette



Snag Resistant Fabric
Improves the snag resistance of the fabric, and leaves the garment looking new wear after wear

4-Way Stretch Fabric
Provides extra comfort and an unrestricted range of movement



RECYCLED CONTENT



RESPONSIBLY PRODUCED COTTON



ACTIVE STRETCH



ANTI-SNAG

Fabrication 51% Cotton/ 46% Recycled Polyester/ 3% Spandex Pique

Weight Mid-Weight – 6.19 oz/yd². / 210gsm

Technical Features **H2XDRY** MOISTURE MANAGEMENT **UVX** SUN PROTECTION

Men's Sizes S-3XL (Black S-5XL)

Women's Sizes XS-2XL (Black XS-3XL)

Decoration Options **E** **HT** **LP**

MSRP \$55.00 (A)



M's & W's: Black



M's & W's: Navy



M's & W's: Ash

Nevada

Premium Cotton Comfort

NEVADA S/S MICRO PIQUE POLO

PSX-6M

The Nevada Polo is made from 100% responsibly produced Certified Cotton pique for superior softness and comfort. UPF 30+ rated pique fabrication improves durability and leaves the garment looking fresh wear after wear. Self-fabric collar with collar stays to maintain shape, even after washing.



anti-snag
CONSTRUCTION

Improves the snag resistance of the fabric, and leaves the garment looking new wear after wear

Classic 3-Button Placket (M's)

Classic polo styling that is easy to wear and easy to style

UVX
SUN PROTECTION

UPF Rating 30+

Technology that protects the skin from the sun's rays



NEVADA S/S MICRO PIQUE POLO

PSX-6M | PSX-6W



Anti-Curl Collar with Collar Stays (M's)

Helps maintain collar shape and structure, even after washing

Classic 3-Button Placket (M's)

Classic polo styling that is easy to wear and easy to style

UPF Rating 30+

Protects the skin from the sun's rays

Mechanical Stretch

Provides added comfort, flexibility and shape retention

Hem Side Slits

Adds fashion detail, comfort and ease of movement at hem

Anti-Curl Combination Collar with Collar Stays (W's)

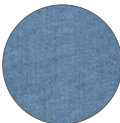
Helps maintain collar shape and structure, even after washing

Open-V 2-Button Placket (W's)

Provides modern, premium styling, flexibility, and comfort

Contoured Seaming (W's)

Provides a closer to body fit and sleek silhouette



Snag Resistant Fabric

Improves the snag resistance of the fabric, and leaves the garment looking new wear after wear



Fabrication	100% Cotton Pique
Weight	Lightweight – 5.01 oz/yd ² / 170gsm
Technical Features	

Men's Sizes	S-3XL (Black, Midnight, Granite S-5XL)
Women's Sizes	XS-2XL (Black, Midnight, Granite XS-3XL)
Decoration Options	
MSRP	\$30.00 (A)



M's & W's: Black



M's & W's: Granite



M's & W's: Midnight



M's & W's: Retro Blue



M's & W's: Storm Grey

Nevada

Premium Cotton Comfort

Nevada L/S Micro Pique Polo

PLX-1M | PLX-1W

The Nevada L/S Micro Pique Polo is made from 100% Certified Cotton for superior softness and comfort. Self-fabric collar with collar stays help keep this collar under control and in shape, even after washing.



NEVADA L/S MICRO PIQUE POLO

PLX-1M | PLX-1W



Anti-Curl Collar with Collar Stays (M's)
Helps maintain collar shape and structure, even after washing

Classic 3-Button Placket (M's)
Classic polo styling that is easy to wear and easy to style

UPF Rating 30+
Protects the skin from the sun's rays

Mechanical Stretch
Provides added comfort, flexibility and shape retention

Hem Side Slits
Adds fashion detail, comfort and ease of movement at hem

Anti-Curl Combination Collar with Collar Stays (W's)
Helps maintain collar shape and structure, even after washing

Classic 5-Button Placket (W's)
Classic polo styling that is easy to wear and easy to style

Contoured Seaming (W's)
Provides a closer to body fit and sleek silhouette

Self Fabric Knit Cuff
Provides enhanced durability and comfort



Fabrication 100% Cotton Pique
Weight Lightweight – 5.01 oz/yd² / 170gsm
Technical Features

Men's Sizes S-3XL (Black, Granite S-5XL)
Women's Sizes XS-2XL (Black, Granite XS-3XL)
Decoration Options
MSRP \$35.00 (A)



M's & W's: Black



M's & W's: Granite



M's & W's: Midnight



M's & W's: Retro Blue



M's & W's: Storm Grey

Volante

Premium Cotton Comfort

Volante H2X-DRY® S/S Polo

PSX-5M | PSX-5W

The Volante H2X-DRY® Polo features an ultra-soft touch 5-ounce single jersey fabric made with an equal blend of GRS-Certified Polyester and Polyester plus Spandex for optimal stretch and shape retention. H2X-DRY® moisture management technology draws moisture away from the skin, helping you to maintain optimal body comfort. UPF Rating of 40+ protects the skin from the sun's rays.



VOLANTE H2X-DRY® S/S POLO

PSX-5M | PSX-5W



Anti-Curl Collar with Collar Stays (M's)
Helps maintain collar shape and structure, even after washing

Classic 3-Button Placket (M's)
Classic polo styling that is easy to wear and easy to style

STORMTECH H2X-DRY® Moisture Management
Allows perspiration to escape from the body, helping to maintain optimal body temperature and comfort

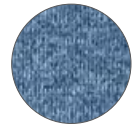
Polygiene® Freshness Technology
Prevents the growth of odor causing bacteria. Wear more, wash less.

Hem Side Slits
Adds fashion detail, comfort and ease of movement at hem

UPF Rating 40+
Protects the skin from the sun's rays

Open-V 2-Button Placket (W's)
Provides modern, premium styling, flexibility, and comfort

Contoured Seaming (W's)
Provides a closer to body fit and sleek silhouette



Snag Resistant Fabric
Improves the snag resistance of the fabric and leaves the garment looking new wear after wear



RECYCLED
CONTENT



ACTIVE
STRETCH



ANTI-SNAG

Additional Features

- 4-Way Stretch Fabric

Fabrication

47% Recycled Polyester/47% Polyester/
6% Spandex Single Jersey

Weight

Lightweight – 5.01 oz/yd² / 170gsm

Technical Features



Men's Sizes

S-3XL (Charcoal Heather, Midnight Heather S-5XL)

Women's Sizes

XS-2XL (Charcoal Heather, Midnight Heather XS-3XL)

Decoration Options



MSRP

\$40.00 (A)



M's & W's: Charcoal Heather



M's & W's: Granite Heather



M's & W's: Midnight Heather



M's & W's: Retro Blue Heather

Volante

Refined All-Day Comfort

VOLANTE H2X-DRY® L/S TEE

TLX-2W

The Volante Long Sleeve Tee features an ultra-soft touch 5-ounce single jersey fabric made with equal blend of GRS-Certified and virgin Polyester. Articulated action shoulders allow you to move freely without binding at the shoulder. H2X-DRY® moisture management technology draws moisture away from the skin, helping you to maintain optimal body comfort. Self-fabric collar for maximum comfort. UPF Rating 30+ protects the skin from the sun's rays.



H2X-DRY
MOISTURE MANAGEMENT

Allows perspiration to escape from the body, helping to maintain optimal body temperature and comfort

Articulated Action Shoulders

Ergonomic design detail promotes optimal range of movement



POLYGIENE
FRESHNESS

Prevents the growth of odor causing bacteria. Wear more, wash less.

UVX
SUN PROTECTION

UPF Rating 30+
Protects the skin from the sun's rays

VOLANTE H2X-DRY® S/S TEE

TSX-5M | TSX-5W

Additional Features

- Snag Resistant Fabric
- Self-Fabric Crew Neck Collar
- 4-Way Stretch Fabric
- Articulated Action Shoulders
- Flatlock Seams
- Contoured Side Panels

Fabrication

47% Recycled Polyester/47% Polyester/
6% Spandex Single Jersey

Weight

Lightweight – 5.01 oz/yd² / 170gsm

Men's Sizes

S-3XL (Charcoal Heather S-5XL)

Women's Sizes

XS-2XL (Charcoal Heather XS-3XL)

Decoration Options



Technical Features



Polygiene® Freshness Technology

Prevents the growth of odor causing bacteria. Wear more, wash less.

STORMTECH H2X-DRY® Moisture Management

Allows perspiration to escape from the body, helping to maintain optimal body temperature and comfort



H2XDRY
ACTIVE MOISTURE
MANAGEMENT



UPF Rating 30+
Protects the skin from the sun's rays

MSRP

\$30.00 (A)



M's & W's: Charcoal Heather



M's & W's: Granite Heather

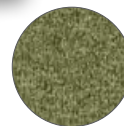


M's & W's: Ash Heather



W's: Ice Blue Heather

W's: Sage Green
(Available in M's)



Snag Resistant Fabric

Improves the snag resistance of the fabric, and leaves the garment looking new wear after wear

VOLANTE H2X-DRY® L/S TEE

TLX-2M | TLX-2W

Additional Features

- Snag Resistant Fabric
- Self-Fabric Crew Neck Collar
- 4-Way Stretch Fabric
- Articulated Action Shoulders
- Flatlock Seams
- Contoured Side Panels

Fabrication

47% Recycled Polyester/47% Polyester/
6% Spandex Single Jersey

Weight

Lightweight – 5.01 oz/yd² / 170gsm

Men's Sizes

S-3XL (Charcoal Heather S-5XL)

Women's Sizes

XS-2XL (Charcoal Heather XS-3XL)

Decoration Options



Technical Features



Polygiene® Freshness Technology

Prevents the growth of odor causing bacteria. Wear more, wash less.

STORMTECH H2X-DRY® Moisture Management

Allows perspiration to escape from the body, helping to maintain optimal body temperature and comfort



H2XDRY
ACTIVE MOISTURE
MANAGEMENT



UPF Rating 30+
Protects the skin from the sun's rays

W's: Ash Heather
(Available in M's)

M's: Charcoal Heather
(Available in W's)



M's & W's:
Granite Heather

MSRP

\$40.00 (A)

Volante

Refined All-Day Comfort



Volante H2X-DRY® 1/4 Zip Pullover

FPL-2M | FPL-2W

The Volante H2X-DRY® 1/4 Zip Pullover features an ultra-soft touch 5-ounce single jersey fabric made with equal blend of GRS-Certified Polyester and polyester with spandex for added stretch and recovery.

H2X-DRY® moisture management technology draws moisture away from the skin, helping you to maintain optimal body comfort. Self-fabric collar for maximum comfort. UPF Rating of 40+ protects the skin from the sun's rays.

VOLANTE H2X-DRY® 1/4 ZIP PULLOVER
FPL-2M | FPL-2W



Low-Profile Chin Saver
Provides extra next to skin
and wind protection

1/4 Zip Front
Adjust to shut out
the cold or allow
heat to escape

**STORMTECH
H2X-DRY®
Moisture
Management**
Allows perspiration
to escape from the
body, helping to
maintain optimal
body temperature
and comfort

**Polygiene®
Freshness
Technology**
Prevents the
growth of odor
causing bacteria.
Wear more, wash
less.

Semi-Auto Locking Zipper
Engineered to lock in position
during activity

UPF Rating 40+
Protects the skin from the
sun's rays

**Contoured Seaming
(W's)**
Provides a closer to
body fit and sleek
silhouette



Snag Resistant Fabric
Improves the snag
resistance of the fabric and
leaves the garment looking
new wear after wear



RECYCLED
CONTENT



ACTIVE
STRETCH



ANTI-SNAG

**Additional
Features**

• 4-way Stretch Fabric

Fabrication

47% Recycled Polyester/47% Polyester/
6% Single Jersey

Weight

Lightweight - 5.01 oz/yd² / 170gsm

**Technical
Features**



Men's Sizes

S-3XL (Charcoal Heather S-5XL)

Women's Sizes

XS-2XL (Charcoal Heather XS-3XL)

**Decoration
Options**



MSRP

\$55.00 (A)



M's & W's: Charcoal Heather



M's & W's: Midnight Heather



M's & W's: Retro Blue Heather



M's & W's: Granite Heather

Settebello

Premium Cotton Comfort

SETTEBELLO S/S POLO

PSX-4W

The Settebello H2X-DRY® Moisture Management polo combines high performance features with a high style design. Artfully crafted features include set-in sleeves, a self-fabric collar and a classic button placket to take looking great to new heights. Made from Certified Cotton for superior softness with GRS-Certified Polyester to help maintain shape and transport moisture away from the skin. UPF rating of 30+ protects the skin from the sun's rays.



Classic 5-Button Placket

For classic yet casual polo styling

H2XDRY MOISTURE MANAGEMENT

Allows perspiration to escape from the body, helping to maintain optimal body temperature and comfort

UVX SUN PROTECTION

UPF Rating 30+

Technology that protects the skin from the sun's rays

SETTEBELLO S/S POLO

PSX-4M | PSX-4W



Anti-Curl Collar with Collar Stays (M's)

Helps maintain collar shape and structure, even after washing

Classic 3-Button Placket (M's)

For classic polo styling

UPF Rating 30+

Protects the skin from the sun's rays

STORMTECH H2X-DRY® Moisture Management

Allows perspiration to escape from the body, helping to maintain optimal body temperature and comfort



Snag Resistant Fabric

Improves the snag resistance of the fabric, and leaves the garment looking new wear after wear

Anti-Curl Combination Collar with Collar Stays (W's)

Contoured collar helps maintain shape and structure, even after washing

Classic 5-Button Placket (W's)

For classic yet casual polo styling

Contoured Seaming (W's)

Provides a closer to body fit and sleek silhouette

Mechanical Stretch

Provides added comfort, flexibility and shape retention

Hem Side Slits

Adds styling detail, comfort and ease of movement at hem



RECYCLED
CONTENT



RESPONSIBLY
PRODUCED
COTTON



ANTI-SNAG

Fabrication

60% Cotton/40% Recycled Polyester Single Jersey

Weight

Lightweight – 4.57 oz/yd² / 155gsm

Technical Features

H2XDRY
MOISTURE MANAGEMENT

UVX
SUN PROTECTION

Men's Sizes

S-3XL (Black, Dolphin, Ice Blue S-5XL)

Women's Sizes

XS-2XL (Black, Dolphin, Ice Blue XS-3XL)

Decoration Options

E **HT** **LP**

MSRP

\$25.00 (A)



M's & W's: Black



M's & W's: Dolphin



M's & W's: Classic Blue



M's & W's: Ice Blue



M's & W's: Sage Green



M's & W's: Rust



M's & W's: White

Settebello

Premium Cotton Comfort

SETTEBELLO S/S TEE

TSX-4W

The Settebello Tee combines 60% Certified Cotton for superior softness with durable GRS-Certified Polyester to help maintain shape and transport moisture away from the skin. The taped neck seam provides extra comfort and durability. Mechanical stretch fabric provides an optional range of movement. UPF Rating 30+ protects the skin from the sun's rays.



H2X DRY
MOISTURE MANAGEMENT

Allows perspiration to escape from the body, helping to maintain optimal body temperature and comfort



anti-snog
CONSTRUCTION

Improves the snag resistance of the fabric, and leaves the garment looking new wear after wear

UVX
SUN PROTECTION

UPF Rating 30+
Protects the skin from the sun's rays

SETTEBELLO S/S TEE

TSX-4M | TSX-4W

Additional Features

- 1x1 Rib Knit Crew Neck
- Snag Resistant Fabric
- Hem Side Slits (W's)

Fabrication

60% Cotton/40% Recycled Polyester Single Jersey

Weight

Lightweight - 4.57 oz/yd² / 155gsm

Men's Sizes

S-3XL (Black, Dolphin, Ice Blue S-5XL)

Women's Sizes

XS-2XL (Black, Dolphin, Ice Blue XS-3XL)

Decoration Options



Technical Features

H2XDRIY
MOISTURE MANAGEMENT

UVX
SUN PROTECTION



RECYCLED CONTENT



RESPONSIBLY PRODUCED COTTON



ANTI-SNAG

Mechanical Stretch
Provides added comfort, flexibility and shape retention

STORMTECH H2X-DRY®
Moisture Management
Allows perspiration to escape from the body, helping to maintain optimal body temperature and comfort



UPF Rating 30+
Protects the skin from the sun's rays

MSRP

\$20.00 (A)



M's & W's: Black



M's & W's: Dolphin



M's & W's: Classic Blue



M's & W's: Ice Blue

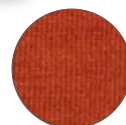


M's & W's: White



W's: Rust
(Available in M's)

M's: Sage Green Heather
(Available in W's)



Snag Resistant Fabric
Improves the snag resistance of the fabric, and leaves the garment looking new wear after wear

SETTEBELLO L/S TEE

TLX-4M | TLX-4W

Additional Features

- 1x1 Rib Knit Crew Neck Collar and Cuff
- Snag Resistant Fabric
- Hem Side Slits (W's)

Fabrication

60% Cotton/40% Recycled Polyester Single Jersey

Weight

Lightweight - 4.57 oz/yd² / 155gsm

Men's Sizes

S-3XL (Black S-5XL)

Women's Sizes

XS-2XL (Black XS-3XL)

Decoration Options



Technical Features

H2XDRIY
MOISTURE MANAGEMENT

UVX
SUN PROTECTION



RECYCLED CONTENT



RESPONSIBLY PRODUCED COTTON



ANTI-SNAG

UPF Rating 30+
Protects the skin from the sun's rays



STORMTECH H2X-DRY®
Moisture Management
Allows perspiration to escape from the body, helping to maintain optimal body temperature and comfort



Mechanical Stretch
Provides added comfort, flexibility and shape retention

MSRP

\$25.00 (A)



M's & W's: Black



M's & W's: White



W's: Dolphin
(Available in M's)

M's: Classic Blue
(Available in W's)

Yosemite

Comfort Without Compromise



Yosemite 1/2 Zip Pullover

FPX-2M | FPX-2W

Streamlined silhouette base layer with 72% GRS-Certified Polyester and 28% Polyester Knit Fleece, the Yosemite 1/2 Zip Pullover features a brushed-back fleece which offers superior thermal properties, while allowing for excellent breathability. A low-profile chin saver provides extra next-to-skin comfort.

YOSEMITE FULL ZIP FLEECE JACKET

FPX-1M | FPX-1W

Additional Features

- Brushed Tricot Lined Collar
- Raglan Sleeves with Darted Shoulder
- Low-Profile Chin Saver
- Color Matched Trim
- Elastic Hem and Cuff Trim

Fabrication

72% Recycled Polyester/ 28% Polyester Knit Fleece, 7.37 oz/yd² / 250gsm

Men's Sizes

S-3XL (Black Heather S-5XL)

Women's Sizes

XS-2XL (Black Heather XS-3XL)

Decoration Options



MSRP

\$80.00 (A)



M's & W's: Black Heather



M's: Navy Heather
(Available in W's)

W's: Granite Heather
(Available in M's)



Ultra-soft GRS
Certified Heathered
Polyester Fleece

YOSEMITE 1/2 ZIP PULLOVER

FPX-2M | FPX-2W

Additional Features

- Brushed Tricot Lined Collar
- Raglan Sleeves with Darted Shoulder
- Low-Profile Chin Saver
- Color Matched Trim
- Elastic Hem and Cuff Trim

Fabrication

72% Recycled Polyester/ 28% Polyester Knit Fleece, 7.37 oz/yd² / 250gsm

Men's Sizes

S-3XL (Black Heather S-5XL)

Women's Sizes

XS-2XL

Decoration Options



MSRP

\$75.00 (A)



M's & W's: Navy Heather

1/2 Zip Front
Adjust to shut out the cold or allow heat to escape

Ultra-Soft
Lightweight
Sweater Knit
Fleece with
Brushed Interior
For ultra-soft
lightweight
layering



M's: Black Heather
(Available in W's)

W's: Granite Heather
(Available in M's)

Cascadia

Featherlight Quilted Comfort

Cascadia Thermal Jacket

TRX-2M | TRX-2W

The Cascadia Thermal Jacket represents a milestone in lightweight thermal technology. Featuring a Thermal Shell polyfill, this is the lightest weight all-season thermal jacket ever developed by Stormtech, suitable for both temperate and cold environments. Both outshell and side panels are constructed with spandex to allow optimal stretch - providing unmatched flexibility and ease of movement.



CASCADIA THERMAL JACKET

TRX-2M | TRX-2W

Additional Features

- High-Performance Stretch Woven Outer Shell with Mechanical Stretch
- Full Coverage Attached Hood with Easy-Lock Adjustment
- High-Density Brushed Back Knit Panels
- Articulated Elbows
- Underarm Gussets
- Zippered On-Seam Hand Warmer Pockets
- Single Hand Hem Adjustment
- Partial Elasticized Cuffs
- Contoured Seaming (W's)

Fabrication

(Shell) 90% Recycled Nylon/ 10% Spandex Poplin, 2.06 oz/yd² / 70gsm
(Shell-Secondary) 84% Recycled Polyester/ 16% Spandex, 5.75 oz/yd² / 195gsm
(Lining) 100% Recycled Polyester

Men's Sizes

S-3XL (Black, Midnight S-5XL)

Women's Sizes

XS-2XL (Black, Midnight XS-3XL)

Decoration Options



Technical Features



THERMAL SHELL
INSULATION



+20°C TO +5°C
68°F TO 41°F



RECYCLED
CONTENT



ACTIVE
STRETCH



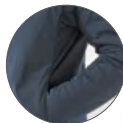
M's & W's: Black

MSRP

\$150.00 (A)

STORMTECH Thermal Shell™ Technology

High loft synthetic insulation, designed to be lightweight, compressible, and provide maximum warmth



Active Stretch
Underarm and
Side Panels



M's: Midnight
(Available in W's)

W's: Storm Grey
(Available in M's)

Active Stretch
Underarm and
Side Panels for
Unrestricted
Mobility

NEW STYLE
NEW STYLE

Durable Water Repellent Finish

Delivers effective water resistance in all weather conditions

CASCADIA THERMAL VEST

TVX-1M | TVX-1W

Additional Features

- High-Performance Stretch Woven Outer Shell with Mechanical Stretch
- High-Density Brushed Back Knit Panels
- Partial Elasticized Armhole Trim
- Zippered On-Seam Hand Warmer Pockets
- Single Hand Hem Adjustment
- Contoured Seaming (W's)

Fabrication

(Shell) 90% Recycled Nylon/ 10% Spandex Poplin, 2.06 oz/yd² / 70gsm
(Shell-Secondary) 84% Recycled Polyester/ 16% Spandex, 5.75 oz/yd² / 195gsm
(Lining) 100% Recycled Polyester

Men's Sizes

S-3XL (Black, Midnight S-5XL)

Women's Sizes

XS-2XL (Black, Midnight XS-3XL)

Decoration Options



Technical Features



THERMAL SHELL
INSULATION



+20°C TO +5°C
68°F TO 41°F



RECYCLED
CONTENT



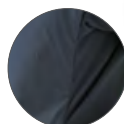
ACTIVE
STRETCH



M's & W's: Midnight

STORMTECH Thermal Shell™ Technology

High loft synthetic insulation, designed to be lightweight, compressible, and provide maximum warmth



Active Stretch
Side Panels



M's: Black
(Available in W's)

W's: Storm Grey
(Available in M's)

MSRP

\$120.00 (A)

NEW STYLE
NEW STYLE

Durable Water Repellent Finish

Delivers effective water resistance in all weather conditions

Appalachian

Built for Every Latitude



Appalachian Thermal Softshell Jacket

TRX-3M | TRX-3W

Flexible, versatile thermal efficiency. The Appalachian Thermal Softshell Jacket is ideally suited for all-season wearing with a lightweight quilted Thermolux™ body and 4-way stretch softshell panels. Durable water repellent finish fabric on the main body helps repel water in damp conditions. Brushed tricot internal stormflap and adjustable hem with drawcord lets you adjust for maximum comfort. The Appalachian Thermal Jacket is built with GRS-Certified Polyester and polyester fabric with 10% Spandex to provide stretch mobility.

APPALACHIAN THERMAL SOFTSHELL JACKET

TRX-3M | TRX-3W

Additional Features

- High-Performance Windproof Outer Shell
- Bonded Stretch Softshell Panels and Sleeves
- Internal Full-Length Stormflap with Brushed Tricot
- Zippered Hand Warmer Pockets (M's)
- On-Seam Zippered Hand Warmer Pockets (W's)
- Contoured Seaming (W's)
- Adjustable Hem with Drawcord
- Articulated Elbows
- Decoration Access

Fabrication

(Shell) 55% Recycled Polyester/ 45% Polyester Taffeta, 1.12 oz/yd² / 38gsm;
(Shell-Secondary) 90% Recycled Polyester/ 10% Spandex 4-way Stretch bonded with 100% Recycled Polyester Fleece, 8.20 oz/yd² / 278gsm;
(Lining): 55% Recycled Polyester/ 45% Polyester

Men's Sizes

S-5XL

Women's Sizes

XS-3XL

Decoration Options



Technical Features



thermolex™
HIGH LOFT SYNTHETIC DOWN



WATERPROOF
LEVEL 1
600MM



WINDPROOF



+20°C TO +5°C
68°F TO 41°F



RECYCLED
CONTENT

Durable Water Repellent Finish
Delivers effective water resistance in all weather conditions

STORMTECH Thermolex™ High Loft Synthetic Down

Highly efficient and compressible feather-free synthetic down engineered to provide superior warmth and comfort in cold weather conditions



M's: Black
(Available in W's)

W's: Granite
(Available in M's)



M's & W's: Midnight

MSRP **\$120.00 (A)**

APPALACHIAN THERMAL SOFTSHELL VEST

TVX-2M | TVX-2W

Additional Features

- High-Performance Windproof Outer Shell
- Bonded Stretch Softshell Panels
- Internal Full-Length Stormflap with Brushed Tricot
- Elastic Armhole Trim
- Zippered Hand Warmer Pockets (M's)
- On-Seam Zippered Hand Warmer Pockets (W's)
- Contoured Seaming (W's)
- Adjustable Hem with Drawcord
- Decoration Access

Fabrication

(Shell) 55% Recycled Polyester/ 45% Polyester Taffeta, 1.12 oz/yd² / 38gsm;
(Shell-Secondary) 90% Recycled Polyester/ 10% Spandex 4-way Stretch bonded with 100% Recycled Polyester Fleece, 8.20 oz/yd² / 278gsm;
(Lining): 55% Recycled Polyester/ 45% Polyester

Men's Sizes

S-5XL

Women's Sizes

XS-3XL

Decoration Options



Technical Features



thermolex™
HIGH LOFT SYNTHETIC DOWN



WATERPROOF
LEVEL 1
600MM



WINDPROOF



+20°C TO +5°C
68°F TO 41°F



RECYCLED
CONTENT

Durable Water Repellent Finish
Delivers effective water resistance in all weather conditions

STORMTECH Thermolex™ High Loft Synthetic Down

Highly efficient and compressible feather-free synthetic down engineered to provide superior warmth and comfort in cold weather conditions



M's: Midnight
(Available in W's)

W's: Granite
(Available in M's)



M's & W's: Black

MSRP **\$100.00 (A)**

NEW STYLE

NEW STYLE

Almeria

Adaptable and Spontaneous



Almeria Computer Pack

BPX-7

A dynamic solution for digital age demands. The Almeria Computer Pack places emphasis on smart simplicity with double front pockets that provide space without the bulk, and a sizeable main compartment to store larger essentials. The laptop sleeve protects your computer from hard impacts and surfaces. Consummate ease and style at your service.

ALMERIA COMPUTER PACK

BPX-7

Dual Carry Handles
Conveniently choose between side or top of bag carrying options

Internal Organization System
Offers efficient storage compartments for organizing accessories

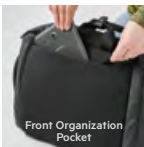
Fits Up to 17" Laptop
Padded protection for full size laptops

Ergonomic Padded Shoulder Straps
Adjust for comfort and even weight distribution

Rolling Luggage Compatible
Easily fits over luggage handles for effortless travel through streets and airports



Black



Front Organization Pocket



Fits Up to 17" Laptop



Internal Organization System



17" MAXIMUM
DEVICE SIZE



ROLLING
LUGGAGE
COMPATIBILITY



DUAL CARRY
HANDLES

Additional Features

- Front Organization Pocket
- Decoration Access

Fabrication

(Shell) 100% Recycled Polyester Oxford 930D PU coated;
(Shell-Secondary) 100% Polyester 600D PU coated

Sizing

18" H x 12" W x 4" D

Volume

12 Liters / 864 Cubic Inch

Decoration Options



MSRP

\$100.00 (A)

Hudson

Adaptable and Spontaneous



Hudson Travel Pack

BPX-6

Highly multi-functional and lightweight the Hudson Travel Pack converts from a computer pack to full size overnight travel backpack. From the office to the trailhead, this travel pack facilitates easy organization and access. Your computer is protected from hard impacts by a suspended laptop compartment with 2 internal organizers and RFID blocking technology. You'll be in your element, while this pack protects your belongings from them.

HUDSON TRAVEL PACK
BPX-6

Fits Up to 16" Laptop
Fits most laptop brands up to 16"

Padded Air Mesh Back Panel
Promotes airflow to keep back cool

Rolling Luggage Compatible
Easily fits over luggage handles for effortless travel through streets and airports

Adjustable Padded Shoulder Straps with Sternum Strap
Provides a comfortable and customizable fit for long lasting wear

TSA Carry-On Size
No need for checked baggage

Dual Carry Handles
Conveniently choose between side or top of bag carrying options

Adjustable Compression Straps
Quick-release straps adjust to reduce bulk and keep contents secure during travel

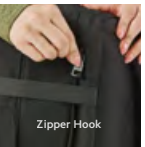
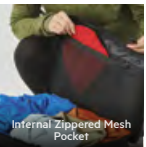
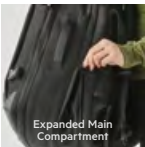
RFID Blocking Pocket
Protects your credit cards and sensitive data

Large Main Opening with 2-Way Zipper
Offers large capacity and allows for efficient access to contents

External Zippered Pocket
Provides quick in-and-out convenience for frequently used items

Zippered Expansion Panel
Converts from a computer pack to overnight travel pack

Black



16" MAXIMUM
DEVICE SIZE



RFID
BLOCKER



ROLLING
LUGGAGE
COMPATIBILITY



TSA CARRY-ON
SIZE

Additional Features

- Internal Zippered Mesh Pockets with Compression Straps
- Large Accessories Pocket with Secure Zipper Closure
- Internal Key Clip
- Expandable Main Compartment
- Suspended Laptop and Tablet Compartment
- Water Bottle Pocket
- Decoration Access



Expanded Side View

Fabrication

(Shell) 100% Polyester Oxford 600D PU coated
(Shell-Secondary) 100% Nylon 200D PVC coated

Sizing

19" H x 12" W x 6.5" D
19" H x 12" W x 9.5" D (Expanded Size)

Volume

24 Liters / 1,482 Cubic Inch
35 Liters / 2,166 Cubic Inch (Expanded Size)

Decoration Options



MSRP

\$100.00 (A)

A person's hand is visible at the top, holding the handle of a black, hard-shell wheeled suitcase. The suitcase is standing upright on a paved surface. The background is a blurred city street at dusk, with warm lights from buildings and street lamps creating a bokeh effect.

Valero

For Personal Escapes

Valero Wheeled Carry-On

BRL-1

The Valero hardshell Wheeled Carry-On is built to provide unprecedented resilience over extended use. With its hard-wearing outshell, multiple reinforcements and telescopic handle, it is engineered to keep up with your professional pace. Strategically astute, this carry-on offers customizable storage solutions, separate laundry storage and an internal adjustable compression straps for optimized volume.



VALERO WHEELED CARRY-ON

BRL-1

Heavy Duty Carry Handle
Convenient carrying when you need to grab and go

TSA Carry-On Size
No need for checked baggage

Internal Partition Panel
Helps keep belongings neatly organized and from shifting during transit

Polycarbonate Hard Shell
Provides durable protection for your belongings

Double 360° Spinner Wheels
Provides smooth and easy maneuverability with all-direction wheels

Telescopic Trolley Handle
Provides adjustable height for convenient and comfortable handling

TSA Accepted Combination Lock
Allows security inspections while keeping your luggage secure with a personal combination code

Two Interior Zippered Pockets
Secure storage and organization for smaller items

Internal Compression Straps
Helps maximize space and secure clothing during travel

Graphite



Interior View



360° SPINNER WHEELS



TSA CARRY-ON SIZE

Additional Features

- Scratch Resistant Polycarbonate Shell
- Ultra Lightweight 2.6 kg/ 5.8 lb Carry-on Size
- Water Resistant Clam Shell Closure

Fabrication

(Shell) 100% Polycarbonate
(Lining and Mesh) 100% Polyester

Sizing 20" H x 13.5" W x 9" D

Volume 40 Liters / 2,430 Cubic Inch

Weight 2.6kg / 5.8 lb

MSRP **\$160.00 (A)**



Eclipse

For Personal Escapes

Eclipse Wheeled Carry-On

BRL-2

The Eclipse Wheeled Carry-On can do precisely that. It has been built to endure, adjust and provide unprecedented resilience. With its hard-wearing material, multiple reinforcements and telescopic handle, it is engineered to keep up with your professional pace. This carry-on offers customizable storage solutions, separate laundry storage and an internal adjustable compression straps for optimized volume.



ECLIPSE WHEELED CARRY-ON
BRL-2




Black



Interior View

Additional Features	• Padlock Compatible Zipper
Fabrication	(Shell) 100% Polyurethane; (Shell-Secondary) 100% Nylon 200D PVC coated

Sizing	20" H x 13.5" W x 9" D
Volume	35 Liters / 2,168 Cubic Inch
Weight	2.35kg / 5.1 lb
Decoration Options	
MSRP	\$140.00 (A)

Aquarius

Cold Performance

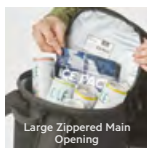
Aquarius 24 Cooler Backpack BCL-1

On-point practicality, The Aquarius 24 Cooler Backpack is a classically styled, durable and easy-to-clean food-safe interior backpack that embraces spontaneity. Throw your favorite refreshments into the spacious main compartment and add your personal accessories into the front pocket. Adjust the ergonomic shoulder straps to control the fit and comfort of the padded back panel, before heading out on your next adventure.

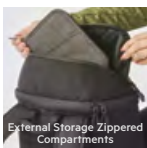


AQUARIUS 24 COOLER BACKPACK

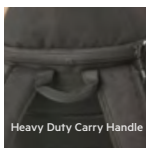
BCL-1



Large Zippered Main Opening



External Storage Zippered Compartments



Heavy Duty Carry Handle

Additional Features

- Use with Stormtech Ice Pack



ICE-1 MSRP \$6.00

ICE-1



EASY-CLEAN
FOOD SAFE
LINING



RECYCLED
CONTENT

Fabrication

(Shell) 100% Recycled Polyester Oxford 930D PU coated
(Shell-Secondary) 100% Polyester 600D PU coated

Sizing

19"H x 10"W x 7.5"D

Volume

23 Liters/1,425 Cubic Inches (24 Cans)

Decoration Options



MSRP

\$60.00 (A)

Aquarius

Cold Performance

Aquarius 16 Cooler Bag

BCL-2

The weather-proof Aquarius 16 Cooler Bag is built to help quench your thirst for the outdoors. Ample space to keep beverages icy cold and sports a practical removeable adjustable shoulder strap and easy-to-clean food-safe interior. It has generous, secure storage space for valuables as well as mesh back pockets for storing keys and accessories.



AQUARIUS 16 COOLER BAG

BCL-2

Additional Features

- Use with Stormtech Ice Pack

Fabrication

(Shell) 100% Recycled Polyester
Oxford 930D PU coated
(Shell-Secondary) 100% Polyester
600D PU coated

Sizing

12"H x 12"W x 8"D

Volume

17 Liters/1,037 Cubic Inches (16 Cans)

Decoration Options



EASY-CLEAN
FOOD SAFE
LINING



RECYCLED
CONTENT

MSRP

\$35.00 (A)



Interior View

Removable Adjustable Shoulder Strap
Provides a comfortable and adjustable fit for easy carrying

Front Organization Pocket
Provides useful storage and easy access to personal items

Padded Carry Handle

Convenient carrying when you need to grab and go

16 Can Capacity

Compact and easy to handle for multiple applications



Back Mesh Pocket

Extra storage to keep snacks and smaller items visible and easy to reach

Easy Clean Food Safe Lining

An easy to clean and safe storage for your food and beverages



ICE-1
MSRP \$6.00

Black

AQUARIUS 12 COOLER BAG

BCL-3

Additional Features

- Use with Stormtech Ice Pack

Fabrication

(Shell) 100% Recycled Polyester
Oxford 930D PU coated
(Shell-Secondary) 100% Polyester
600D PU coated

Sizing

8"H x 10"W x 6"D

Volume

9 Liters/552 Cubic Inches (12 Cans)

Decoration Options



EASY-CLEAN
FOOD SAFE
LINING



RECYCLED
CONTENT

MSRP

\$25.00 (A)

Secure Carry Handle

Durable and convenient carry handle ensures secure and comfortable use

12 Can Capacity
Compact and easy to handle for multiple applications

Easy Clean Food Safe Lining
An easy to clean and safe storage for your food and beverages



Back Mesh Pocket

Extra storage to keep snacks and smaller items visible and easy to reach

Black

